



Tel: 86-755-26948719
Mobile/WeChat: 86-13662574726
Email: sales@lishigroup.com
Skype: lsvision01
Website: www.lsvisionhd.com
Address: 2nd floor, No.E building, Longjing science and technology park, No.335 Bulong Road, Longgang district, Shenzhen city, Guangdong province, China

For a Better World



PRODUCT CATALOG

Shenzhen LS VISION Technology Co., Ltd.

COMPANY PROFILE

Shenzhen LS VISION Technology Co., Ltd., founded in 2010, is a provider specializing in low-power solar AI intelligent monitoring systems. Since its establishment, the company has always adhered to our core values of "quality, innovation, and dedication", continuously providing added value to customers. In 2015, Zhi'an Tianxia was awarded the qualifications of "National High tech Enterprise" and "Shenzhen High tech Enterprise". At the same time, we have passed the ISO9001-2015 intellectual property certification and the German TUV certification, and we are also a member unit of the Shenzhen Internet of Things Association.

Every year, LS VISION is increasing research and development investment and technological innovation, especially based on surveillance cameras and intelligent algorithms, achieving the research and development and market application of products such as facial recognition temperature measurement, facial recognition attendance system, personnel statistics, thermal imaging temperature measurement, etc. We are committed to providing customers with products and services with better cost-effectiveness and a better sense of experience. At the same time, we not only strive to achieve technological innovation, but also care more about the future of the Earth. Since 2018, we have been investing in the research and development of low-power battery cameras, low-power solar cameras, and other products. We hope that our products will be more energy-efficient, environmentally friendly, and solve the blind spots of outdoor powerless monitoring. In the future, LS VISION will continue to increase research and development investment, providing users with more intelligent and environmentally friendly security products and solutions.

Along the way, our products have been sold to more than 100 countries worldwide and have received a lot of praise and endorsement from customers. As a national high-tech enterprise, our mission is to provide safer and more environmentally friendly products and solutions for this planet. Thank you for your support and look forward to working together. Our slogan is: For a Better World.



LS VISION Partners From Worldwide



LS VISION Exhibition In The World



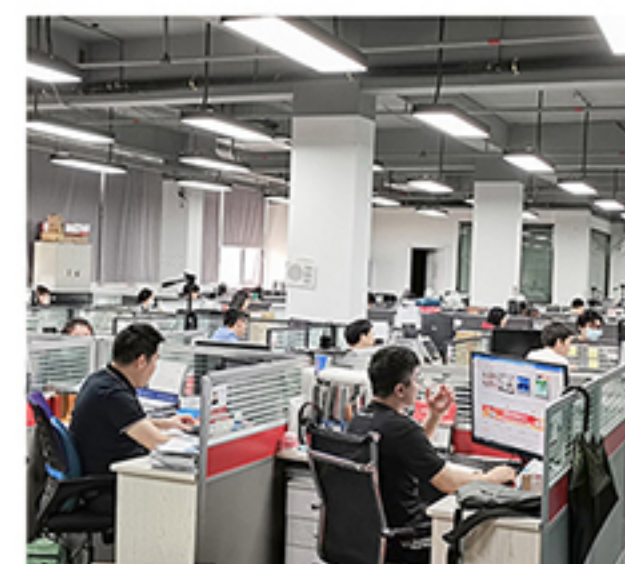
Shenzhen LS VISION Technology Co., Ltd. is a professional smart video security surveillance solutions provider since 2010. Who won the "High-tech Enterprise" and "Member Unit of Shenzhen Intelligent Security Chamber of Commerce". We have got the quality management system certification ISO9001:2015, environmental management system certification ISO14001:2015 and intellectual property management system certification. The products developed have CE/FCC/RoHS certification.



WHY CHOOSE LS VISION

12 years of security product development experience

Provide customers with the best service



R&D Office



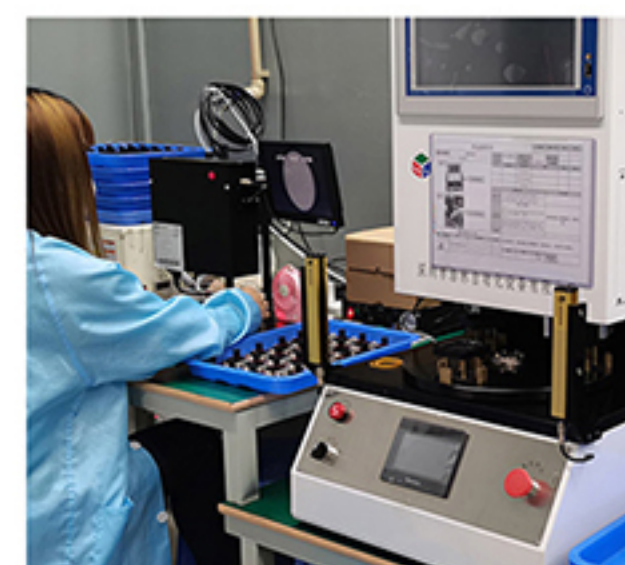
R & D Center



Workshop



Workshop



Lens Focus



Waterproof Test



Aging Room



Product Warehouse

DEVELOPMENT PATH



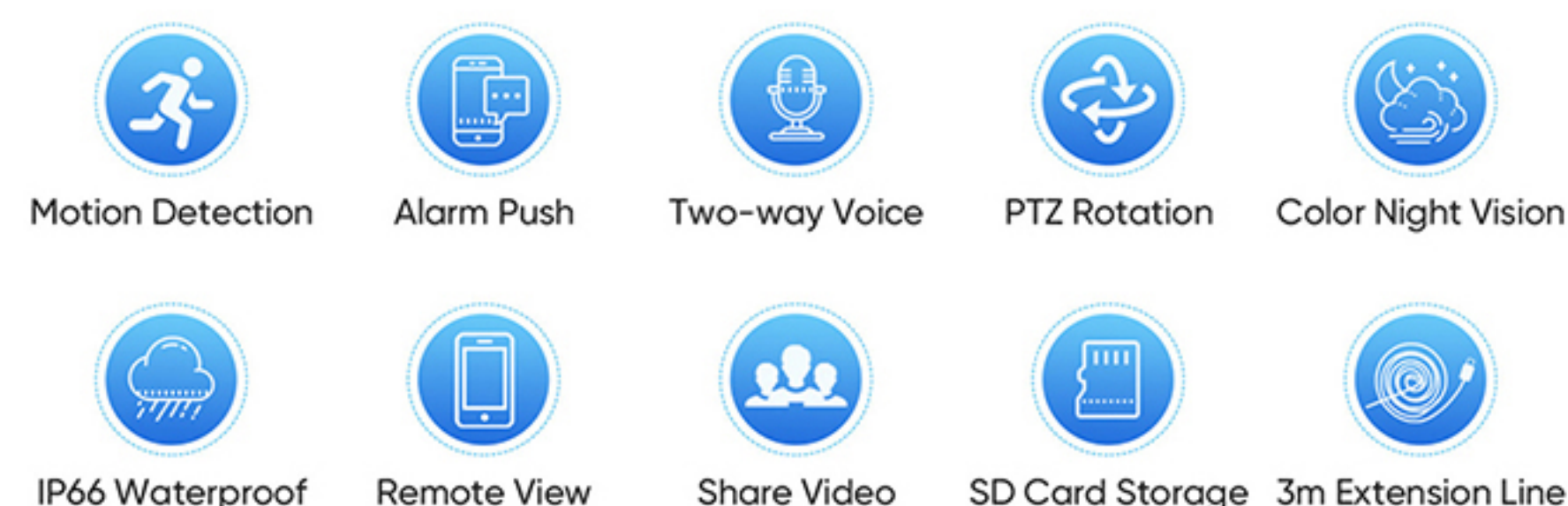
Low-power Solar Camera Series

Model | LS-4GS20 LS-WS20 LS-4GS20L LS-WS20L

4G/Wifi Dual Lens Dual PIR Solar Powered Battery Camera

1. 2K dual lens wifi solar powered battery floodlight PTZ camera
2. Pan&Tilt: Pan 355 degree&Tilt 100 degree
3. 9 watt solar panel with 3m extension cord, built-in 15600mAh batteries
4. Two-way voice intercom
5. Cloud storage and TF card storage maximum 128G (without TF card)
6. Dual PIR +Ai humanoid detection alarm and video recording
7. Arbitrary arming time can be set
8. 2.8mm +6mm lens, built-in infrared light + white light, night vision full color or infrared mode optional, IR distance 30 meters
9. Support dual-video linkage positioning and humanoid automatic tracking
10. Waterproof grade IP66
11. 4G Camera: Built-in 4G module, different modules in different countries. 4G network remote viewing/playback via APP (UBox).

WIFI Camera: WIFI 2.4GHz , IEEE 802.11 b/g/n, remote viewing/playback via APP (UBox).

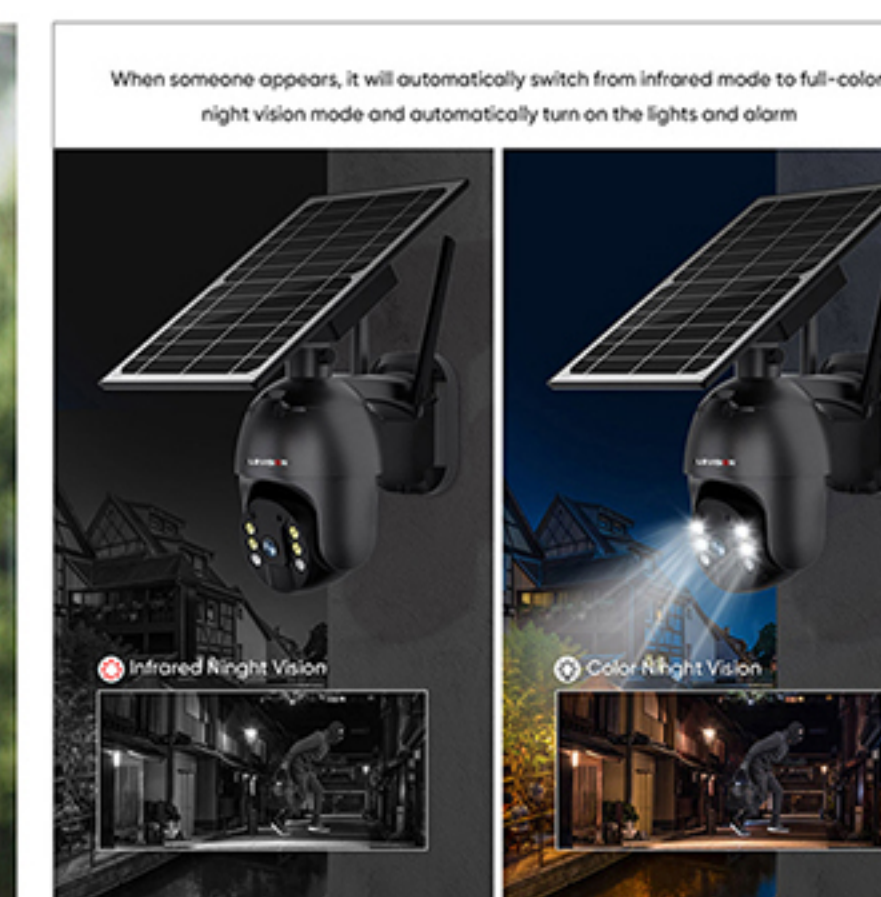


Model | LS-4GS12 LS-WS12 4G/Wifi Solar Powered Battery Camera & PTZ camera

1. 4MP 4G camera built-in 4G module, different modules in different countries
2. Pan&Tilt: Pan 355 degree& Tilt 100 degree
3. 8 watt solar panel, built-in 15600mAh 6 pcs 18650 batteries
4. Two-way voice intercom, IP66 Waterproof
5. Cloud storage and TF card storage maximum 128G (without TF card)
6. 4G network remote viewing/playback via APP (UBox)
WIFI 2.4GHz , IEEE 802.11 b/g/n, remote viewing/playback via APP (UBox)
7. Automatic video recording and message push when human body motion wakes up
8. 3.6mm lens, built-in infrared light + white light, night vision full color or infrared mode optional
9. Infrared distance 15 meters. Arbitrary arming time can be set



Main Feature



Marvelous Series

Bullet and Dome PTZ linkage Solar Camera

4K dual lens solar powered battery camera

5 Watt Solar Panel

Built-in 20000mAh Batteries



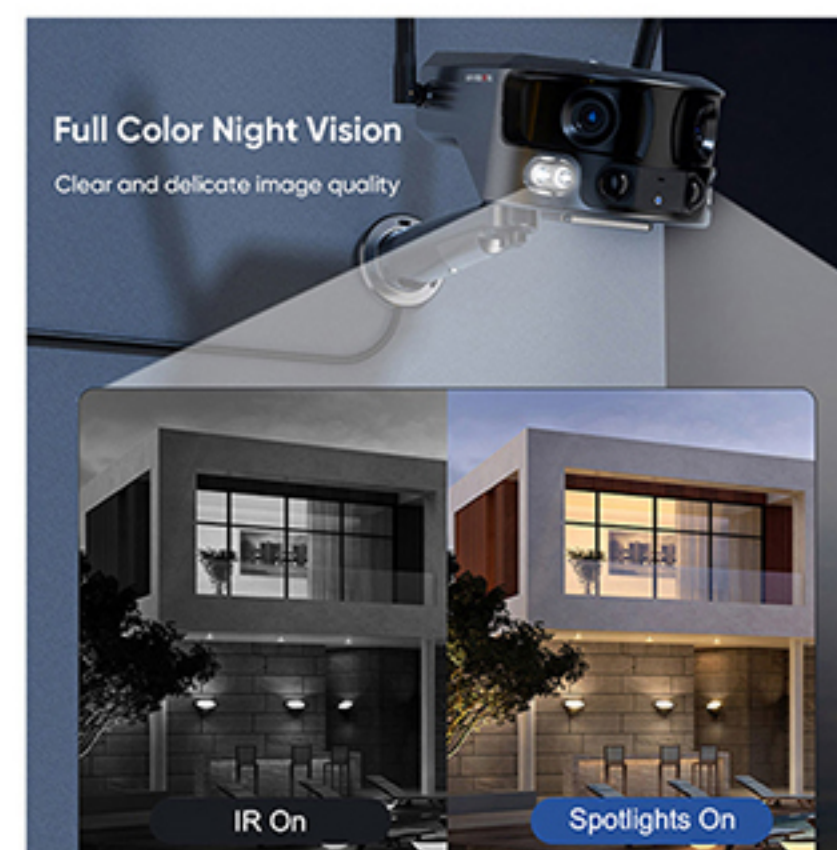
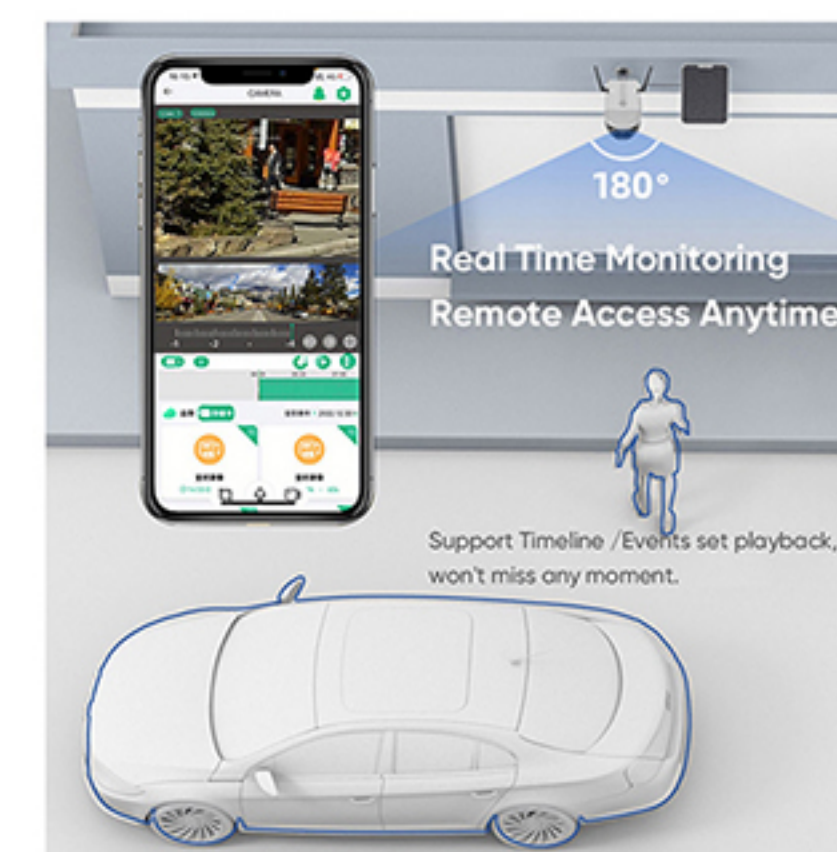
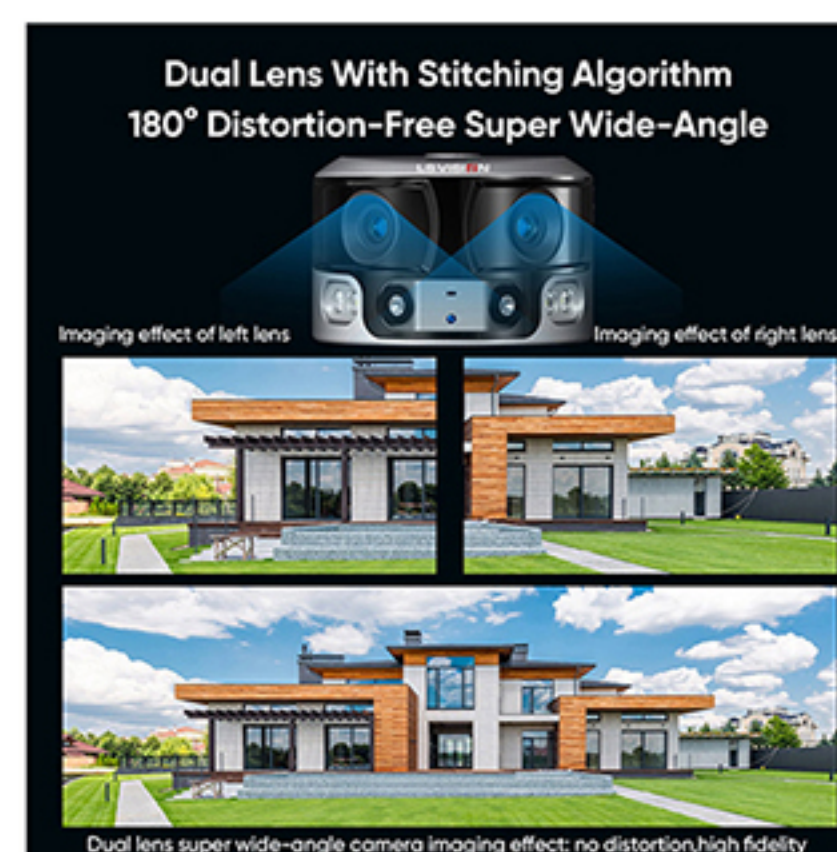
Model | LS-MS1-4G LS-MS1 4K Dual Lens 4G/Wifi Solar Powered Camera

1. 4K dual lens wifi/4G solar powered battery floodlight PTZ camera
2. Wifi Model: WIFI 2.4GHz , IEEE 802.11 b/g/n. 4G Model: Built-in 4G module, different modules in different countries
3. Pan&Tilt: Pan 355 degree&Tilt 90 degree.Two-way voice intercom
4. 5 watt solar panel,built-in 20000mAh batteries
5. Cloud storage and TF card storage maximum 128G(without TF card)
6. Support Android, IOS APP remote viewing/playback (APP:NiView)
7. PIR + humanoid detection wake-up video recording and message push
8. 24 hours recording, 24 hours + trigger recording, trigger recording three working modes
9. Fixed Focus Model: 2.5mm wide-angle lens + 6mm lens,Seeing clearly from far and near
10x Zoom Model: 2.5mm wide-angle lens + 5-50mm 10x optical zoom lens,Seeing clearly from far and near
10. Support motion detection, humanoid detection, humanoid automatic tracking, video 3D positioning, waterproof grade IP66



Model | LS-MS2-4G LS-MS2 4K Dual Lens 180° Ultra Wide Angle Solar Camera

1. 4K/8MP WIFI/4G panoramic solar powered battery camera
2. Dual lens 180° ultra wide Angle monitoring
3. Wifi Camera: WIFI 2.4GHz , IEEE 802.11 b/g/n.
4G Camera: Built-in 4G module, different modules in different countries
4. 6 watt solar panel with 2m extension cord,built-in 18000mAh batteries, solar panels support integrated installation and separate installation
5. Cloud storage and TF card storage maximum 128G (without TF card)
6. Support Android, IOS APP remote viewing/playback (APP:NiView)
7. PIR + humanoid detection wake-up video recording and message push
8. 24 hours recording, 24 hours + trigger recording, trigger recording three working m
9. Dual light source design, night vision full color distance of 20 meters, night vision infrared distance of 40 meters
10. 2pcs 2.8mm lenses spliced to super wide angle viewing, 4x digital zoom and dual channel preview to achieve a panoramic and detailed view
- 11.Support humanoid detection, humanoid automatic tracking
- 12.Waterproof grade IP66.
- 13.Two-way voice intercom



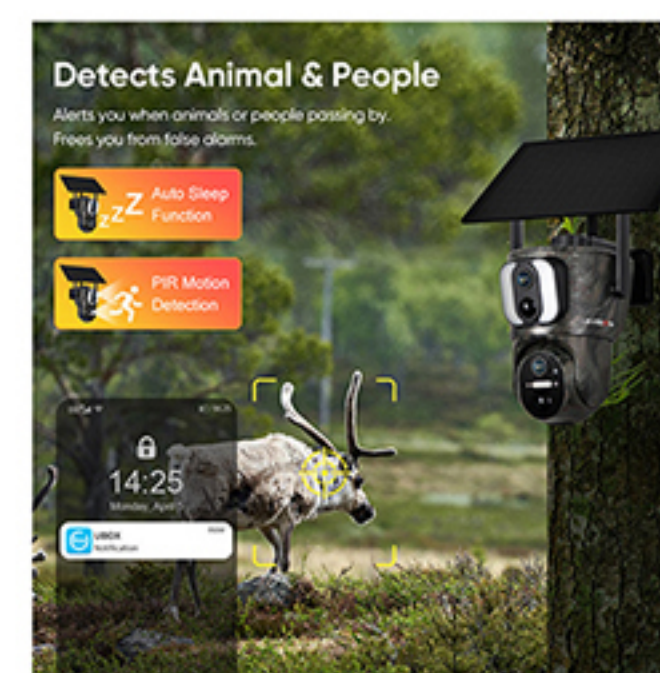
Model | LS-4GS21 LS-WS21 4G/Wifi Solar Battery Camera

1. 2K dual lens wifi solar powered battery floodlight PTZ camera
2. Pan&Tilt: Pan 355 degree&Tilt 100 degree
3. WIFI Camera: 6 watt solar panel with 3m extension cord, built-in 10000mAh batteries
4G Camera: 6 watt solar panel with 3m extension cord, built-in 15000mAh batteries
4. Two-way voice intercom
5. Cloud storage and TF card storage maximum 128G (without TF card)
6. WIFI Camera: WIFI 2.4GHz, IEEE 802.11 b/g/n, remote viewing/playback via APP (UBox)
4G Camera: 4G network remote viewing/playback via APP (UBox)
7. Dual PIR + Ai humanoid detection alarm and video recording
8. Arbitrary arming time can be set
9. 2.8mm +6mm lens, built-in infrared light + white light, night vision full color or infrared mode optional, IR distance 30 meters
10. Support dual-video linkage positioning and humanoid automatic tracking
11. Waterproof grade IP66



Model | LS-4GS21M LS-WS21 4G/Wifi Solar Battery Camera

1. 2K dual lens wifi solar powered battery floodlight PTZ camera
2. Pan&Tilt: Pan 355 degree&Tilt 100 degree
3. WIFI Camera: 6 watt solar panel with 3m extension cord, built-in 10000mAh batteries
4G Camera: 6 watt solar panel with 3m extension cord, built-in 15000mAh batteries
4. Two-way voice intercom
5. Cloud storage and TF card storage maximum 128G (without TF card)
6. WIFI Camera: WIFI 2.4GHz, IEEE 802.11 b/g/n, remote viewing/playback via APP (UBox)
4G Camera: 4G network remote viewing/playback via APP (UBox)
7. Dual PIR + Ai humanoid detection alarm and video recording
8. Arbitrary arming time can be set
9. 2.8mm +6mm lens, built-in infrared light + white light, night vision full color or infrared mode optional, IR distance 30 meters
10. Support dual-video linkage positioning and humanoid automatic tracking
11. Waterproof grade IP66



Model | LS-MS3A-10X LS-MS3A-4G-10X Multi-Lens 4G/Wifi Solar Battery Camera

1. WiFi Version Camera:

- (1). 2K/ 4MP multi-lens wifi solar powered battery floodlight PTZ camera
- (2). WIFI 2.4GHz , IEEE 802.11 b/g/n;

2. 4G Version Camera:

- (1). 2K/ 4MP multi-lens 4G & wifi solar powered battery floodlight PTZ camera
- (2). Support 4G and wifi 2.4GHz two modes of Internet access, through the mode switch change

3. Pan&Tilt: Pan 355 degree&Tilt 90 degree

4. 6 watt solar panel with 2m extension cord, built-in 12000mAh batteries

5. Two-way voice intercom

6. Cloud storage and TF card storage maximum 128G (without TF card)

7. Support Android, IOS APP remote viewing/playback (APP: NiView)

8. PIR + humanoid detection wake-up video recording and message push

9. 24 hours recording, 24 hours + trigger recording, trigger recording three working modes

10. 2.8mm wide-angle lens and 6mm+16mm PTZ lens, 10X Optical + Digital Hybrid zoom, Seeing clearly from far and near

11. Built-in infrared light + white light, night vision full color or infrared mode optional IR distance 25 meters

12. Support motion detection, humanoid detection, dual-video linkage positioning and humanoid automatic tracking

13. Waterproof grade IP66



Model | LS-MS3B-20X LS-MS3B-4G-20X Dual Lens 4G/Wifi Solar Battery Camera

1. WiFi Version Camera:

- (1). 2K/ 4MP dual lens wifi solar powered battery floodlight PTZ camera
- (2). WIFI 2.4GHz , IEEE 802.11 b/g/n;

2. 4G Version Camera:

- (1). 2K/ 4MP dual lens 4G solar powered battery floodlight PTZ camera
- (2). Built-in 4G module, different modules in different countries

3. Pan&Tilt: Pan 355 degree&Tilt 90 degree

4. 6 watt solar panel with 2m extension cord, built-in 12000mAh batteries

5. Two-way voice intercom

6. Cloud storage and TF card storage maximum 128G (without TF card)

7. Support Android, IOS APP remote viewing/playback (APP: NiView)

8. PIR + humanoid detection wake-up video recording and message push

9. 24 hours recording, 24 hours + trigger recording, trigger recording three working modes

10. 4mm+16mm dual lens 20X Optical + Digital Hybrid Zoom

11. Built-in infrared light + white light, night vision full color or infrared mode optional IR distance 25 meters

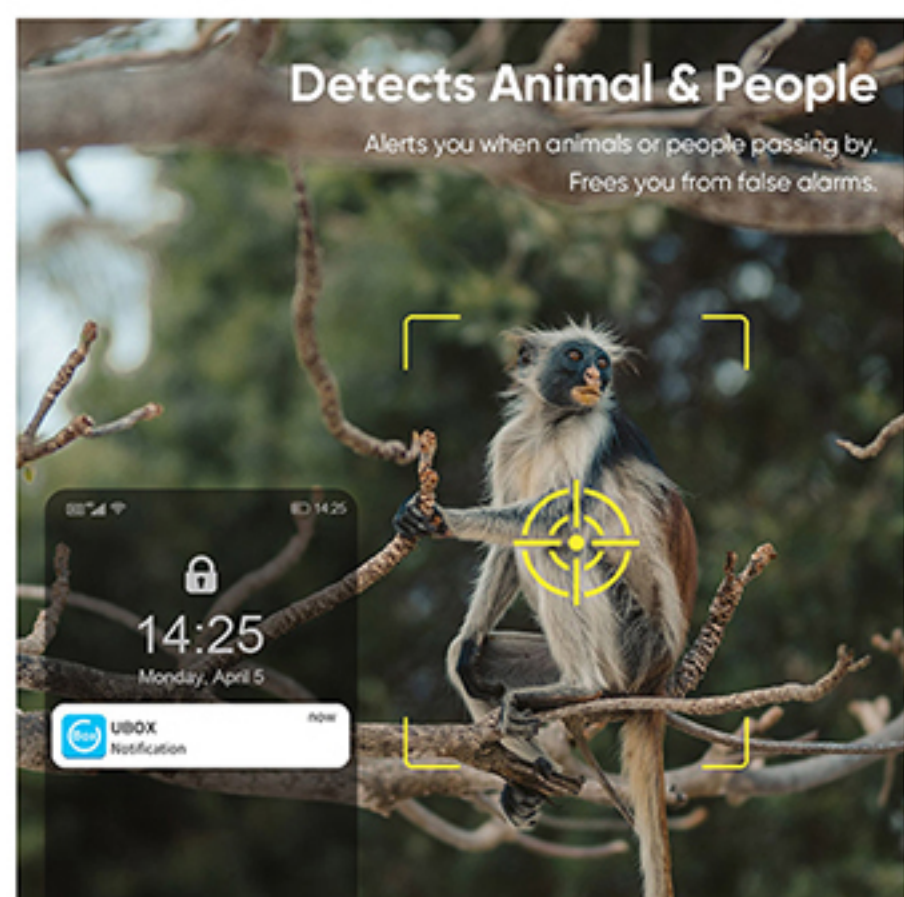
12. Support motion detection, humanoid detection, and automatic tracking

13. Waterproof grade IP66



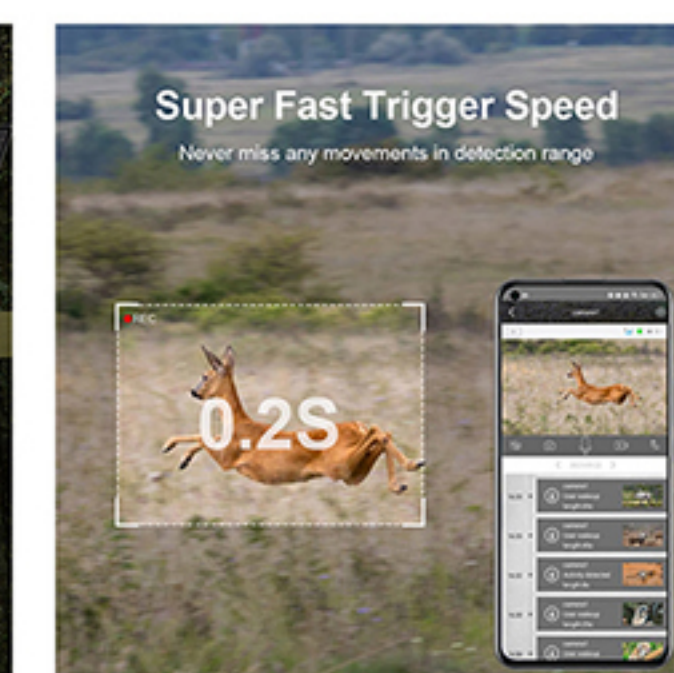
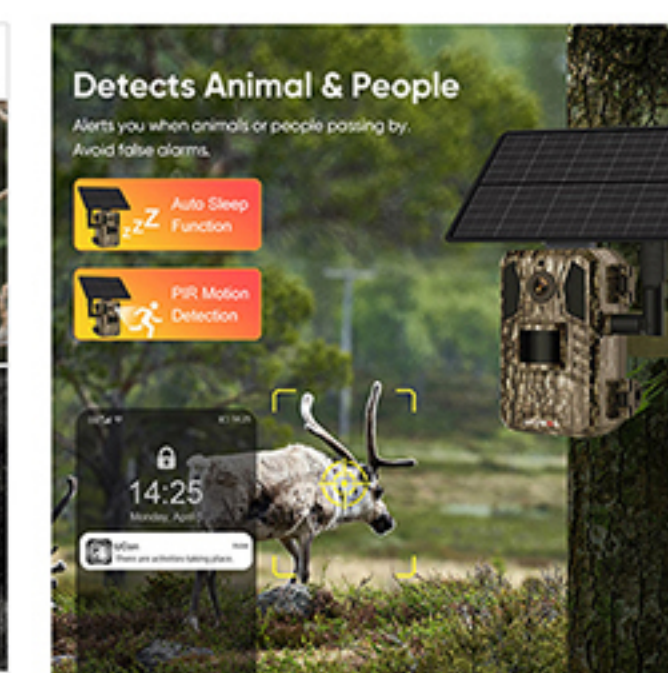
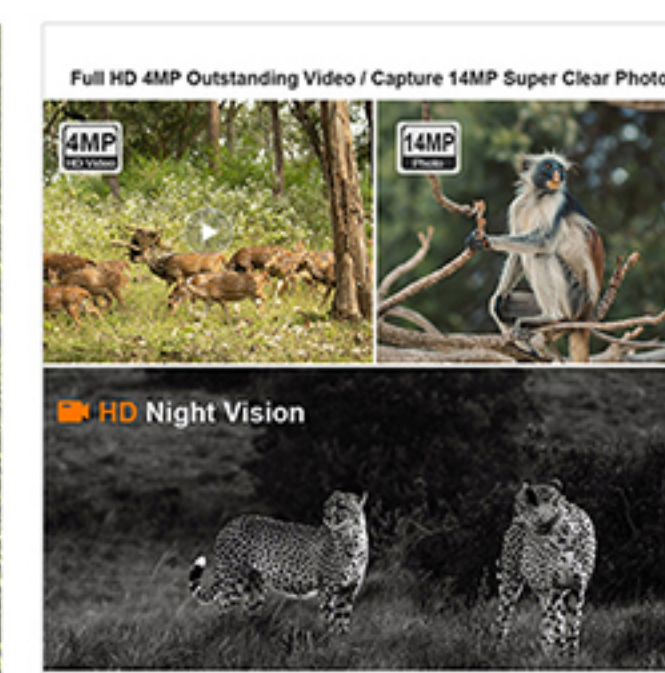
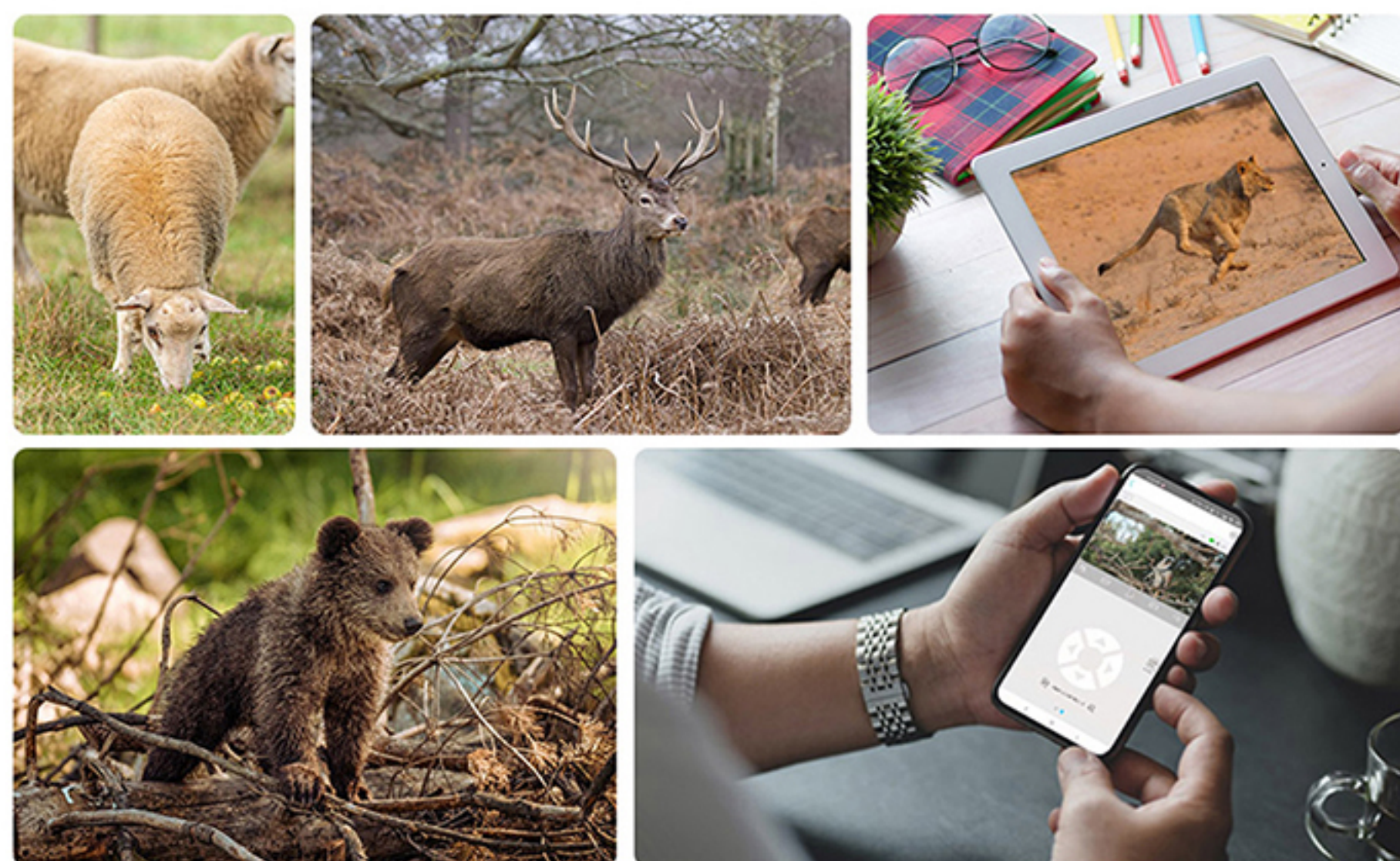
Model | LS-4GS16M 4G Solar Powered Battery Camera & PTZ camera

1. 3MP 4G solar powered battery PTZ camera
2. Built-in 4G module, different modules in different countries
3. Pan&Tilt: Pan 240 degree&Tilt 100 degree
4. 6 watt solar panel with 3m extension cord, built-in 10400mAh batteries
5. Two-way voice intercom
6. Cloud storage and TF card storage maximum 128G (without TF card)
7. 4G network remote viewing/playback via APP (UBox)
8. Automatic video recording and message push when human body motion wakes up
9. Arbitrary arming time can be set
10. 3.6mm lens, built-in infrared light + white light, night vision full color or infrared mode optional IR distance 15 meters
11. Waterproof grade IP66



Model | LS-HM1-4G 4G Solar Cellular Hunting Camera

1. 4G solar alert intelligent hunting camera
2. Built-in 4G module, different modules in different countries
3. 4 watt solar panel with 3m extension cord, built-in 7800mAh (18650) batteries, supports quick disassembly and replacement
4. Two-way voice intercom
5. Cloud storage and TF card storage maximum 128G (without TF card)
6. 4G network remote viewing/playback via APP (UCon)
7. Ultra-low power standby, quick wake up in 0.2 seconds
8. PIR sensing +Ai move detection alarm
9. Support picture mode (14MP) or video mode(4MP) can be set
10. 3.6mm lens, built-in infrared light (850nm), night vision distance 15 meters
11. Support integrated installation and separated installation
12. Waterproof grade IP66



Application Scenario



Doorway



Villa



Parking Lot



Street



Reservoir



Orchard



Construction Site



Pasture

LS-4GS09 LS-WS09

6W

1. 3MP/4MP 4G/wifi solar powered battery floodlight PTZ camera
2. Pan&Tilt:Pan 355 degree & Tilt 100 degree
3. 6 watt solar panel,built-in 15000mAh batteries,Two-way voice intercom
4. Cloud storage and TF card storage maximum 128G (without TF card)
5. Wifi Model: WIFI 2.4GHz , IEEE 802.11 b/g/n;
4G Model: Built-in 4G module, different modules in different countries.
6. Remote viewing/playback via APP(UBox)
7. Automatic video recording and message push when human body motion wakes up
8. Arbitrary arming time can be set
9. 3.6mm lens, infrared light or white light can be set , dual use for video surveillance and garden lights
10. Waterproof grade IP66



LS-CS1 3.5W

1. 3MP Dual lens WIFI solar powered battery PTZ camera
2. Pan&Tilt:Pan 355 degree&Tilt 100 degree
3. 3.5 watt solar panel with 3m extension cord, build-in 8000mAh batteries
4. Two-way voice intercom
5. Cloud storage and TF card storage maximum 128G (without TF card)
6. WIFI 2.4GHz, IEEE 802.11b /g/n, remote viewing/playback via APP (O- KAM)
7. PIR + humanoid detection wake-up video recording and message push
8. 4mm+12mm dual lens 10X Optical + Digital Hybrid Zoom
9. Sound and light alarm,and custom alarm sound
10. Supports preset point, two point scan and watch guard functions
- 11.Dual light source design, night vision full color distance of 20 meters, night vision infrared distance of 40 meters
12. Waterproof grade IP66



LS-WS10-4M LS-4GS10-4M 3.5W

- 4MP 4G/Wifi solar powered battery camera & PTZ camera
1. Wifi Model: WIFI 2.4GHz , IEEE 802.11 b/g/n,built-in 7800mAh batteries.
4G Model: Built-in 4G module, different modules in different countries, built-in 10400mAh batteries
 2. Pan&Tilt:Pan 355 degree&Tilt 100 degree
 3. 3.5 watt solar panel
 4. Two-way voice intercom
 5. Cloud storage and TF card storage maximum 128G (without TF card)
 6. Remote viewing/playback via APP (UBox)
 7. Automatic video recording and message push when human body motion wakes up
 8. Arbitrary arming time can be set
 9. 3.6mm lens,built-in infrared light + white light, night vision full color or infrared mode optional IR distance 15 meters
 10. Waterproof grade IP66



LS-WS14 LS-4GS14

3.5W/6W

- 3MP 4G/Wifi solar powered battery camera & PTZ camera
1. Wifi Model: WIFI 2.4GHz , IEEE 802.11 b/g/n,
4G Model: Built-in 4G module, different modules in different countries
 2. Pan&Tilt:Pan 355 degree&Tilt 100 degree
 3. Wifi Model: 3.5 watt solar panel,built-in 7800mAh batteries.
4G Model: 6 watt solar panel,built-in 10400mAh batteries
 4. Two-way voice intercom
 5. Cloud storage and TF card storage maximum 128G (without TF card)
 6. Remote viewing/playback via APP (UBox)
 7. Automatic video recording and message push when human body motion wakes up
 8. Arbitrary arming time can be set
 9. 3.6mm lens, infrared light or white light can be set , dual use for video surveillance and garden lights
 10. Waterproof grade IP66



LS-WS40 LS-4GS40

20W

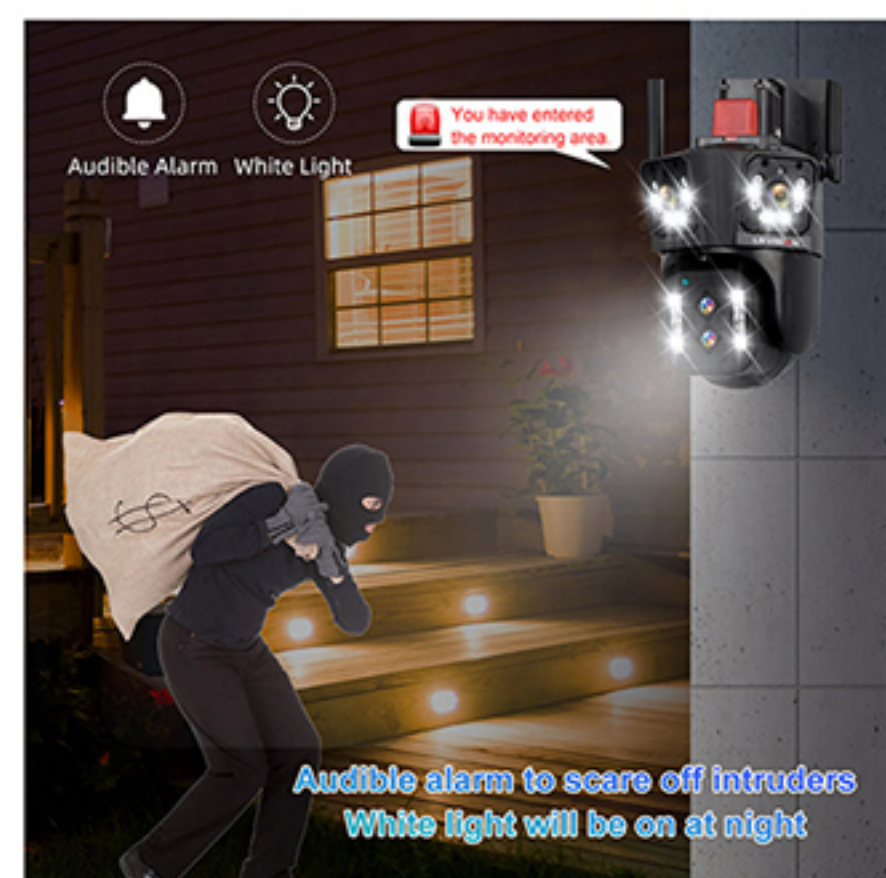
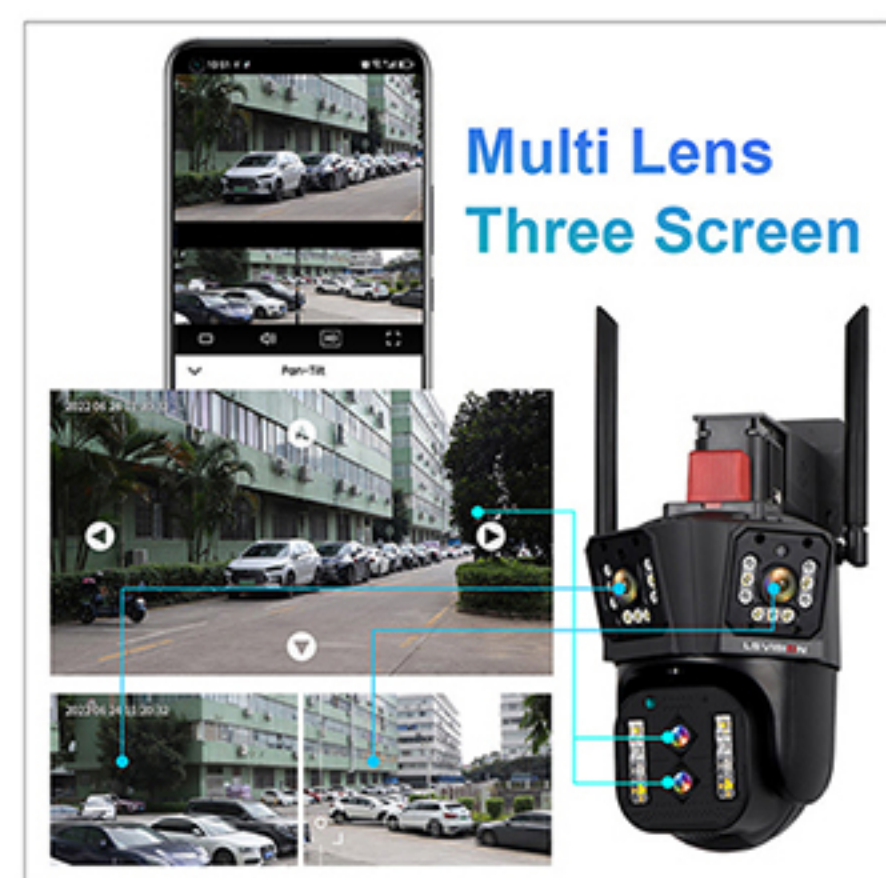
- 3MP 4G/Wifi solar powered battery PTZ camera, 24-hours long video + low power sleep dual mode
2. Wifi Model: WIFI 2.4GHz , IEEE 802.11 b/g/n,
4G Model: Built-in 4G module, different modules in different countries
 - 24-hour recording when the battery is sufficient, trigger recording when the battery is low
 3. Pan&Tilt:Pan 355 degree&Tilt 100 degree
 4. 20 watt solar panel,built-in 30000mAh batteries
 5. Two-way voice intercom
 6. Cloud storage and TF card storage maximum 128G (without TF card)
 7. Remote viewing/playback via APP(UBox)
 8. Mobile phone APP message push when someone is detected
 9. Arbitrary arming time can be set
 10. 3.6mm lens,built-in infrared light + white light, night vision full color or infrared mode optional IR distance 15 meters
 11. Waterproof grade IP66



Multi Lens Camera Series

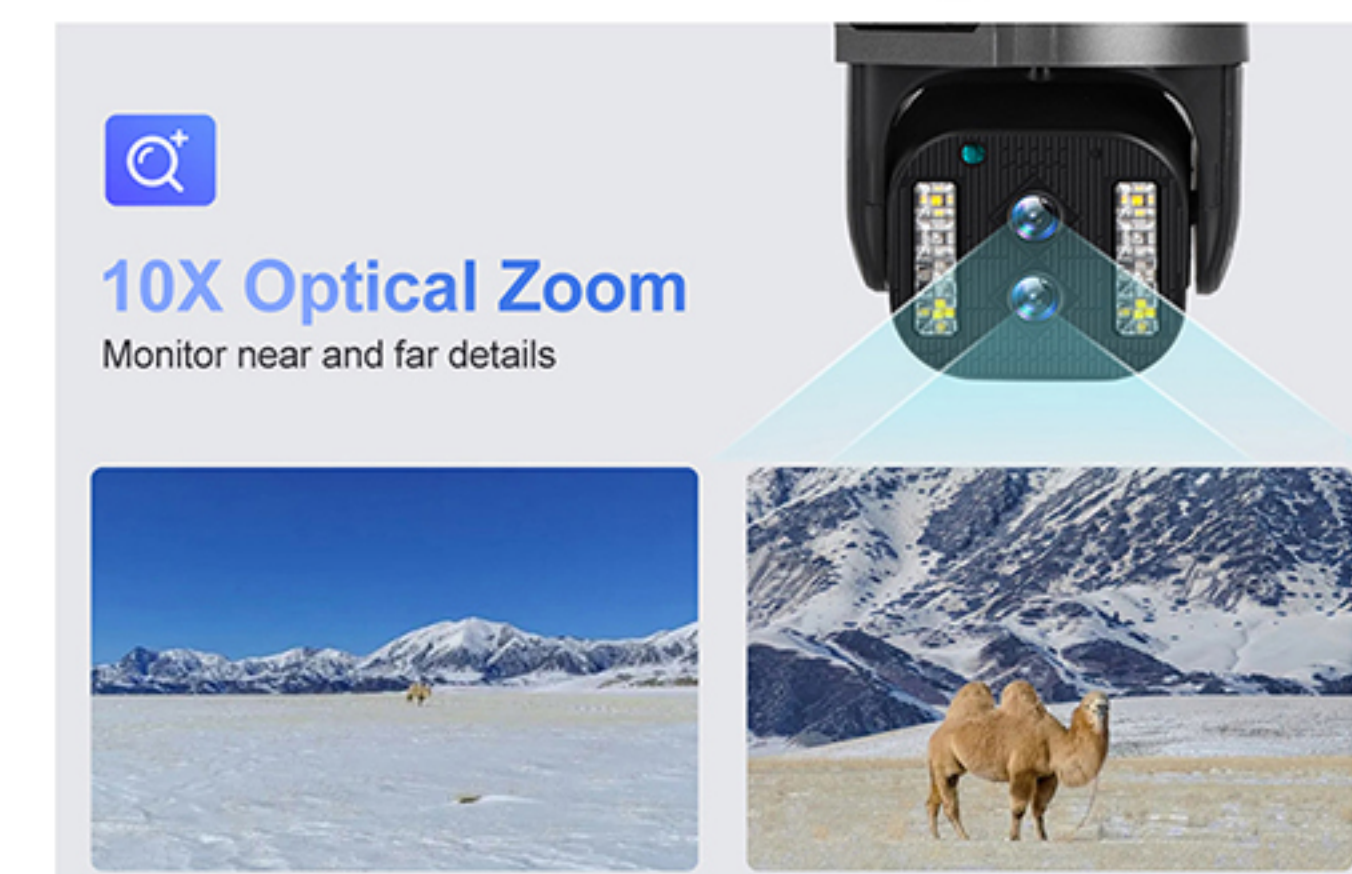
Model | LS-WL342-10X LS-WL342-20X 10X/20X Zoom Linkage WIFI PTZ camera

1. Four 4MP ultra high definition lenses, linked alarm WIFI cameras;
2. 3.5-inch engineering plastic shell, outdoor waterproof;
3. Four lenses and three frames, horizontal dual shot ultra wide angle+10x zoom lens for panoramic and detail free surveillance Control;
4. Efficient monitoring, one top three (2 gun machines+1 billiards machine);
5. Built-in infrared and white light, night vision infrared and night vision full color options;
6. Pan tilt rotation angle: 0-355 degrees horizontally and 0-90 degrees vertically;
7. Multiple networking methods using 2.4G WIFI and RJ45 network ports;
8. Support TF storage and cloud storage;
9. Dual voice intercom, dual video synchronous recording and playback
10. Human shape detection/vehicle detection/pet detection/other detection (you need to pay to open it, and then open Cloud storage Can)
11. Automatic tracking/movement alarm, alarm output, sound and light linkage;
12. AI intelligent algorithm to achieve 3D positioning of gun ball videos and continuous tracking of target alarms;
13. Support remote management of Android/Apple mobile apps (IPC360 Home)



Model | LS-WL341-10X 10X Optical Zoom Linkage WIFI PTZ camera

1. 3.5 inch 4MP HD 10x zoom PTZ camera;
2. Three-lens dual-screen, ultra-wide-angle + 10x zoom to achieve clear monitoring from far and near;
3. Dual light source design, built-in infrared light + white light, night vision infrared and night vision full color can be set;
4. Pan&Tilt: horizontal 0~355 degrees, vertical 0~90 degrees;
5. 2.4G WIFI + RJ45 network port for Internet access;
6. Support TF storage and cloud storage (free one month cloud storage);
7. Two-way voice intercom, two-way video synchronous recording and playback
8. Humanoid detection/vehicle detection/pet detection/other detection (need to open cloud storage)
9. Automatic tracking/movement alarm, alarm output sound and light linkage;
10. AI intelligent algorithm to achieve video 3D positioning and continuous tracking of target alarms;
11. Support Android/IOS APP remote management (IPC360 Home).
12. power supply DC 12V



Model | LS-WL341-20X 20X Optical Zoom Linkage WIFI PTZ camera

1. 3.5 inch 4MP HD 20x zoom PTZ camera;
2. Four-lens dual-screen, ultra-wide-angle + 20x zoom PTZ to achieve clear monitoring from far and near;
3. Dual light source design, built-in infrared light + white light, night vision infrared and night vision full color can be set;
4. Pan&Tilt: horizontal 0~355 degrees, vertical 0~90 degrees;
5. 2.4G WIFI + RJ45 network port for Internet access;
6. Support TF storage and cloud storage (free one month cloud storage);
7. Two-way voice intercom, two-way video synchronous recording and playback
8. Humanoid detection/vehicle detection/pet detection/other detection (need to open cloud storage)
9. Automatic tracking/movement alarm, alarm output sound and light linkage;
10. AI intelligent algorithm to achieve video 3D positioning and continuous tracking of target alarms;
11. Support Android/IOS APP remote management (IPC360 Home).
12. power supply DC 12V



Model | LS-WL560-36X 36X Optical Zoom WIFI PTZ Camera

1. 4.5 inch 6MP HD 36X zoom PTZ camera;
2. Dual-lens dual-screen, ultra-wide-angle + 36X optical zoom PTZ to achieve clear monitoring from far and near;
3. Dual light source design, built-in infrared light + white light, night vision infrared and night vision full color can be set;
4. Pan&Tilt: horizontal 0~355 degrees, vertical 0~90 degrees;
5. 2.4G WIFI + RJ45 network port for Internet access;
6. Support TF storage and cloud storage (free one month cloud storage);
7. Two-way voice intercom, two-way video synchronous recording and playback;
8. Support humanoid detection, motion detection, intelligent sound and light alarm;
9. Support ONVIF protocol and access NVR;
10. Supports PC client preview (VMS) ;
11. Support Android/IOS APP remote management ;
12. power supply DC 12V.



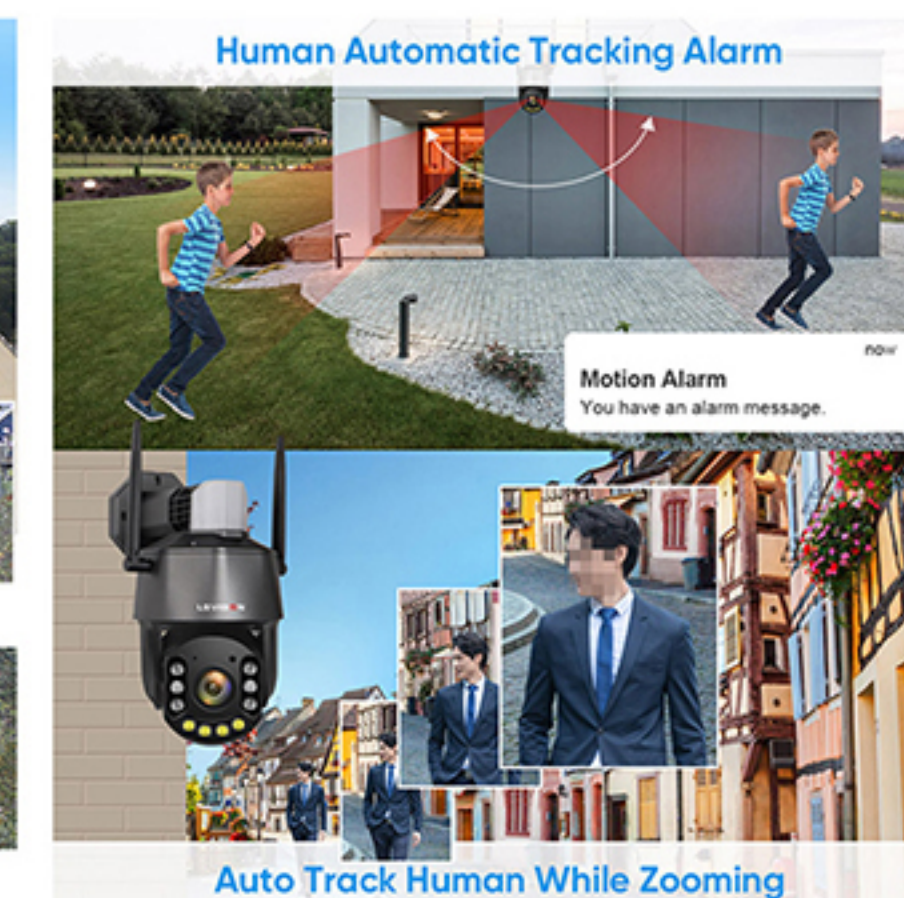
Model | LS-WL242-10X 4MP WIFI/4G 10X Zoom PTZ Camera

1. 2.8 inch 4MP HD 10X zoom PTZ camera;
2. Three-lens dual-screen, ultra-wide-angle + 10X zoom PTZ to achieve clear monitoring from far and near;
3. Dual light source design, built-in infrared light + white light, night vision infrared and night vision full color can be set;
4. Pan&Tilt: horizontal 0~355 degrees, vertical 0~90 degrees;
5. WIFI Camera: Only 2.4G WIFI networking is supported;
4G Camera: Only 4G networking is supported;
6. Support TF storage and cloud storage;
7. Two-way voice intercom, two-way video synchronous recording and playback;
8. Support humanoid detection, motion detection, intelligent sound and light alarm, can customize the alarm sound;
9. Support automatic tracking, preset point function;
10. Support the upper and lower screen linkage;
11. Support Android/IOS APP remote management;
12. power supply DC 12V.



Model | LS-P550-30X LS-P550-4G-30X 5MP 30X Optical Zoom 4G/WIFI PTZ camera

1. 4.5 inch 5MP HD WIFI/4G PTZ camera;
2. Metal+ plastic case, outdoor waterproof;
3. Rotation Angle: 355 degrees horizontal, 90 degrees vertical, the highest speed of 60 degrees /S;
4. WIFI/4G antenna, TF card storage, cloud storage, two-way voice intercom;
5. 30X optical zoom lens, the maximum daytime viewing distance of 1000-2000 meters;
6. Dual light source design, night vision full color 50 meters, night vision infrared 120 meters;
7. Support humanoid detection, sound and light alarm, APP push, and custom alarm sound
8. Support humanoid tracking, and automatically zoom the lens in the tracking process;
9. Support preset points and cruise function;
10. Support ONVIF protocol and access NVR;
11. Support 2.4G WIFI/4G SIM Card and RJ45 access network;
12. Support Android/IOS APP and PC client management (APP CamHipro)

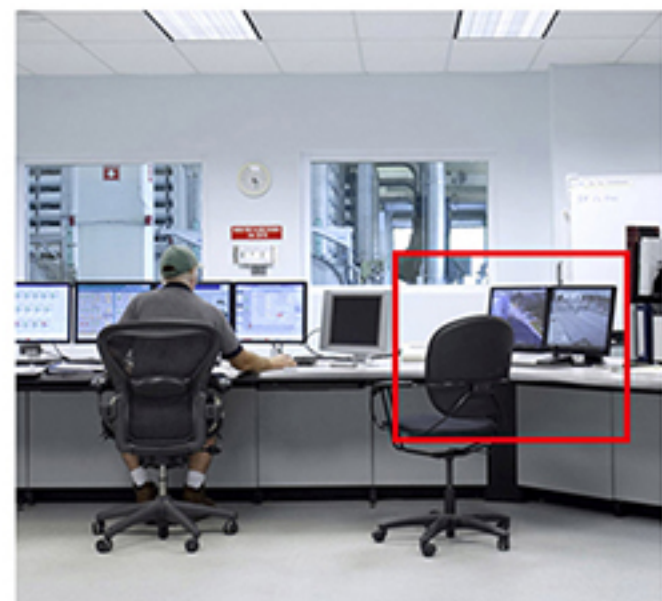


MATE Series IP Cameras&NVR



Feature | MATE Series IP Camera

1. HD network camera, fixed focus, electric zoom lens optional
2. H.265, H.264, dual stream
3. Built-in high-fidelity microphone, support audio and video recording
4. With humanoid detection and alarm function
5. The gun camera comes standard with dual light sources, 2 infrared 2 white light
6. High-definition picture quality, infrared/low illumination starlight night vision optional
7. IP66 waterproof: adapt to any weather changes outdoors
8. Support front-end storage, some models can be equipped with TF card slot
9. The smart series has the functions of target counting, electronic fence, retrograde detection, missing detection, etc.



Absent Detect



Retrograde Detect



Electronic Fence



Target Counting

Application Scenario



Residential Area



Garden



Parking Lot



Street



School



Shopping Mall



Airport

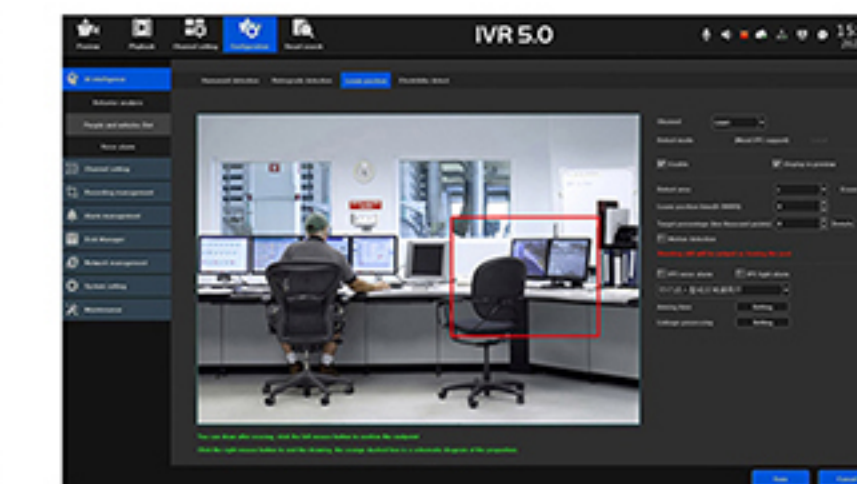


Station

CMS Interface



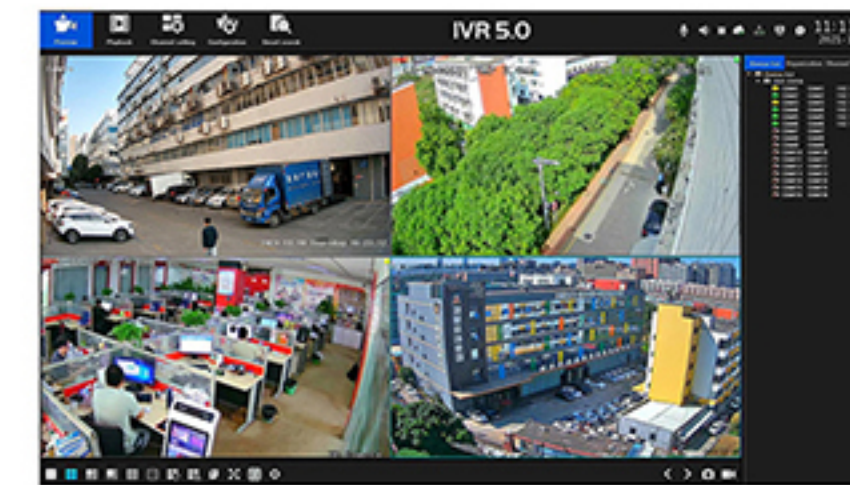
Electronic fence settings



Absent detect settings



Retrograde detect settings



Real-time preview monitoring



HD quality during the day



Infrared or full color night vision

MATE Series Ordinary Model

LS-MB31501 5MP



1. 5MP@20fps/ 4MP@25fps/ 3MP@25fps /2MP@25fps
2. Standard Fixed lens 3.6mm
3. H.265, H.264, double streams
4. Dual light source, 2 infrared&2 white light
5. Built-in microphone, Humanoid detection
6. DC12V&POE, IR distance up to 20M

LS-MB31801 8MP



1. 8MP(3840*2160)15fps;5MP(2592*1944) 25fps
2. Standard Fixed lens 3.6mm
3. H.265, H.264, double streams
4. Dual light source, 2 infrared&2 white light
5. Built-in microphone, Humanoid detection
6. DC12V&POE, IR distance up to 20M

LS-MD11501 5MP



1. 5MP@20fps/ 4MP@25fps/ 3MP@25fps /2MP@25fps
2. Standard Fixed lens 3.6mm
3. H.265, H.264, double streams
4. Support humanoid detection
5. DC12V&POE, IR distance up to 20M

LS-MD11801 8MP



1. 8MP(3840*2160)15fps;5MP(2592*1944) 25fps
2. Standard Fixed lens 3.6mm
3. H.265, H.264, double streams
4. Support humanoid detection
5. DC12V& External POE, IR distance up to 20M

LS-MB33501M 5MP



1. 5MP@20fps/ 4MP@25fps/ 3MP@25fps /2MP@25fps
2. Standard Motorized lens 2.8-12mm
3. H.265, H.264, double streams
4. Dual light source, 2 infrared&2 white light
5. Built-in microphone, Humanoid detection
6. DC12V&POE, IR distance up to 40M

LS-MB33801M 8MP



1. 8MP(3840*2160)15fps;5MP(2592*1944) 25fps
2. Standard Motorized lens 2.8-12mm
3. H.265, H.264, double streams
4. Dual light source, 2 infrared&2 white light
5. Built-in microphone, Humanoid detection
6. DC12V&POE, IR distance up to 40M

LS-MD13501M 5MP



1. 5MP@20fps/ 4MP@25fps/ 3MP@25fps /2MP@25fps
2. Standard Motorized lens 2.8-12mm
3. H.265, H.264, double streams
4. Support humanoid detection
5. DC12V&POE, IR distance up to 40M

LS-MD13801M 8MP



1. 8MP(3840*2160)15fps;5MP(2592*1944) 25fps
2. Standard Motorized lens 2.8-12mm
3. H.265, H.264, double streams
4. Support humanoid detection
5. DC12V&POE, IR distance up to 40M

MATE Series Smart Model

LS-MB31401-A 4MP



1. 1/2.6"CMOS 4MP,2560x1440@25fp
2. Standard Fixed lens 3.6mm
3. H.265, H.264, double streams
4. Dual light source, support full color night vision and infrared night vision
5. Built-in microphone and speaker ,Two-way voice intercom
6. Six AI alert functions: Area Intrusion, Line-Cross Detection, Loitering, Absent Alarm, Vehicle illegal Parking, Vehicle Retrograde (support access to MATE series NVR linkage application)
7. DC12V&POE, IR distance up to 20M

LS-MD10401-A 4MP



1. 1/2.6"CMOS 4MP,2560x1440@25fp
2. Standard Fixed lens 3.6mm
3. H.265, H.264, double streams
4. Dual light source, support full color night vision and infrared night vision
5. Built-in microphone and speaker ,Two-way voice intercom
6. Six AI alert functions: Area Intrusion, Line-Cross Detection, Loitering, Absent Alarm, Vehicle illegal Parking, Vehicle Retrograde (support access to MATE series NVR linkage application)
7. DC12V&POE, IR distance up to 20M

MATE NVR Series

LS-NM9104MP LS-NM9108MP 4CH/8CH



1. H.265/H.264 adaptive network camera
2. 4CH/8CH POE interface, support up to 16CH 8MP/5MP/4MP/3MP/2MP video input
3. 1CH 5MP/4CH Substream Playback
4. Mini 1U, 1 SATA interface, 4 PoE/8 PoE(IEEE 802.3at, IEEE 802.3af), 1 RJ45 10M/100M, 1HDMI/VGA Output
5. Target Counting, Electronic Fence, Retrograde Detect, Absent Detect (only support private protocol Smart IPC)
6. Power Supply: 52V DC

LS-NM9216P LS-NM9216 16CH



1. H.265/H.264 adaptive network camera
2. 16CH POE/No POE 4K, 25-32CH/5MP/4MP/3MP/2MP video input
3. 1CH 4K/5MP, 4CH 1080P Playback
4. 1U, 2 SATA interface, 1 RJ45 10M/100M, 1HDMI/VGA Output
5. Target Counting, Electronic Fence, Retrograde Detect, Absent Detect (only support private protocol Smart IPC)
6. Power Supply: 52V DC

LS-NM9436R 36CH



1. H.265/H.264 adaptive network camera
2. 36 CH 4K/5MP/4MP/3MP/2MP video input
3. 1CH 4K, 4CH 1080P, 16CH D1 Playback
4. 1.5U, 4 SATA interface, 2 RJ45 10M/100M/1000M, 1 HDMI/VGA Output
5. Audio in/out 1/1, Alarm in/out 2/1
6. Target Counting, Electronic Fence, Retrograde Detect, Absent Detect (only support private protocol Smart IPC)
7. Power Supply: 12V DC

LS-NM9AA8 128CH



1. H.265/H.264 adaptive network camera
2. 128 CH 4K/5MP/4MP/3MP/2MP video input
3. 4CH 4K/5MP, 16CH 1080P Playback
4. 3U, 16 SATA interface, 1 RJ45 10M/100M/1000M, 1HDMI/VGA Output
5. Audio in/out 1/1, Alarm in/out 4/4
6. Target Counting, Electronic Fence, Retrograde Detect, Absent Detect (only support private protocol Smart IPC)
7. Support RAID0, RAID1, RAID5, RAID6, RAID10; Power Supply: 100-240V AC

LS-NM9464R 64CH



1. H.265/H.264 adaptive network camera
2. 64 CH 4K/5MP/4MP/3MP/2MP video input. 1CH 4K, 4CH 1080P, 16CH D1 Playback
4. 1.5U, 4 SATA interface, 2 RJ45 10M/100M/1000M, 1 HDMI/VGA Output
5. Audio in/out 1/1, Alarm in/out 2/1
6. Target Counting, Electronic Fence, Retrograde Detect, Absent Detect (only support private protocol Smart IPC)
7. Only supports up to 36 split-screen display (Note: 64-channel preview needs to be page-turned)
8. Power Supply: 12V DC

LS-NM99A8 128CH



1. H.265/H.264 adaptive network camera
2. 128 CH 4K/5MP/4MP/3MP/2MP video input
3. 4CH 4K/5MP, 16CH 1080P Playback
4. 2U, 9 SATA interface, 1 RJ45 10M/100M/1000M, 1HDMI/VGA Output
5. Audio in/out 1/1, Alarm in/out 4/4
6. Target Counting, Electronic Fence, Retrograde Detect, Absent Detect (only support private protocol Smart IPC)
7. Support RAID0, RAID1, RAID5, RAID6, RAID10; Power Supply: 100-240V AC

POE NVR KIT Camera



Feature | 4MP POE NVR KIT AI Camera

1. Support Six AI alert functions: Area Intrusion, Line-Cross Detection, Loitering, Absent Alarm, Vehicle illegal Parking, Vehicle Retrograde
2. Support mobile APP alarm push
3. Support two-way voice intercom
4. Modify the night vision mode and camera parameters
5. Support custom alarm sound
6. Support ordinary event alarm: motion detection, video loss, video occlusion
7. Supports mobile APP and PC client management



Line-Cross Detection



Vehicle illegal Parking



Vehicle Retrograde



LS-PK3404 4MP

1. 4 pcs 4MP AI alert POE bullet cameras, built-in microphone and speaker, 4mm lens.
2. 1 pcs 4CH POE NVR, 1 HDD, 1 CH 3.5 audio input and 1 CH 3.5 audio output, VGA and HDMI output
3. 25 meter cable*2, 15 meter cable*2, power supply*1, mouse*1



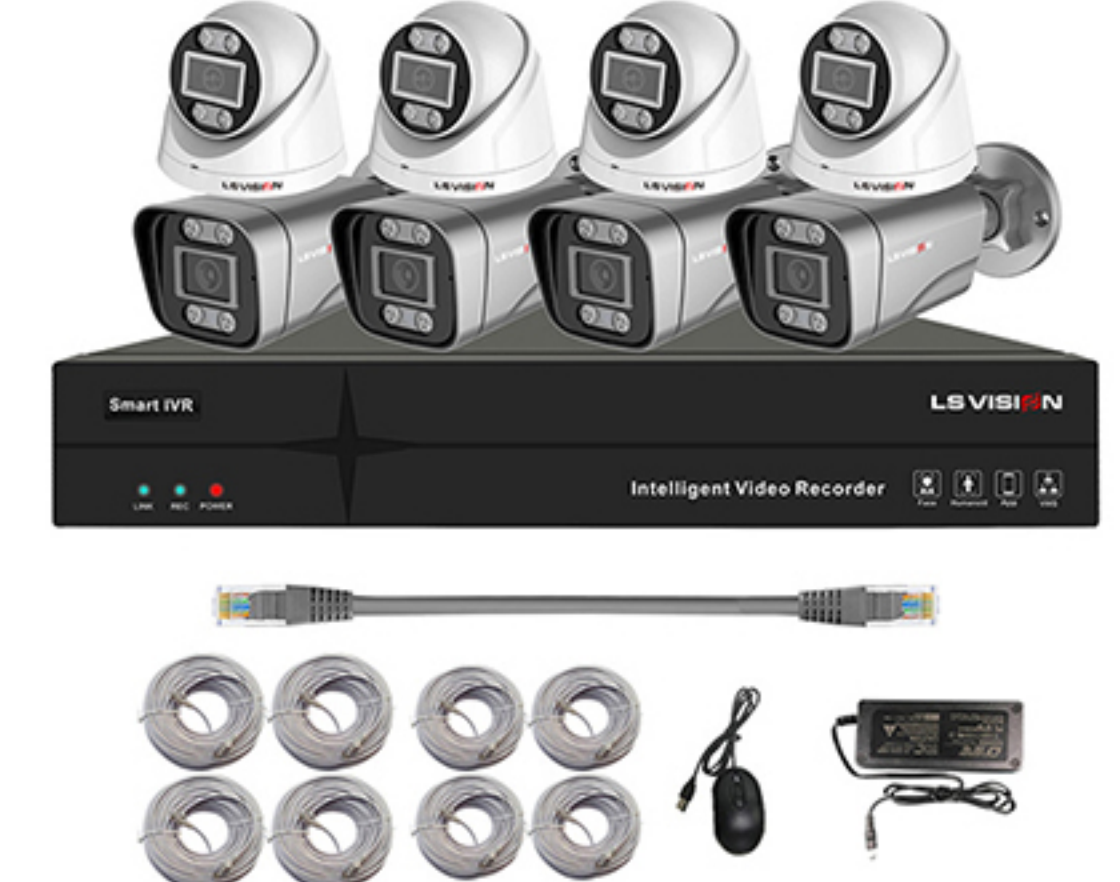
LS-PK3404H 4MP

1. 2 pcs 4MP AI alert POE bullet cameras + 2 pcs 4MP AI alert POE dome (Plastic case) cameras, built-in microphone and speaker, 4mm lens
2. 1 pcs 4CH POE NVR, 1 HDD, 1 CH 3.5 audio input and 1 CH 3.5 audio output, VGA and HDMI output
3. 25 meter cable*2, 15 meter cable*2, power supply*1, mouse*1



LS-PK3408 4MP

1. 8 pcs 4MP AI alert POE bullet cameras, built-in microphone and speaker, 4mm lens
2. 1 pcs 8CH POE NVR, 1 HDD, 1 CH 3.5 audio input and 1 CH 3.5 audio output, VGA and HDMI output
3. 25 meter cable*4, 15 meter cable*4, power supply*1, mouse*1



LS-PK3408H 4MP

1. 4 pcs 4MP AI alert POE bullet cameras + 4 pcs 4MP AI alert POE dome (Plastic case) cameras, built-in microphone and speaker, 4mm lens
2. 1 pcs 8CH POE NVR, 1 HDD, 1 CH 3.5 audio input and 1 CH 3.5 audio output, VGA and HDMI output
3. 25 meter cable*4, 15 meter cable*4, power supply*1, mouse*1

Solar And Battery Powered Systems

30W Solar Panel-DC 5V

	LS-K10	LS-K10S
Appearance		 Double Solar Panel
Power	30W	30W
Output Voltage	DC 5V	DC 5V
Battery Capacity	Built-in 30AH Battery	Built-in 30AH Battery
Solar Panel Size	350mm*600mm	350mm*350mm*2
Package Size	625*410*206mm	410*410*205mm
Weight	5.5kg	5.8kg

LS-K10

1. 30W solar panel, size 350mm*600mm;
2. All-in-one metal bracket with built-in 3.2V 30AH battery;
3. Output voltage: DC5V; Maximum output current 3.5A;
4. Support battery status indicator display;
5. It can last 2-3 days in cloudy and rainy conditions for a 5V 1.5W PTZ camera.

LS-K10S

1. 30W Double solar panel (15W*2PCS), size 350mm*350mm,
2. All-in-one metal bracket with built-in 3.2V 30AH battery;
3. Output voltage: DC5V; Maximum output current 3.5A
4. Support battery status indicator display;
5. It can last 2-3 days in cloudy and rainy conditions for a 5V 1.5W PTZ camera.

60W Solar Panel-DC 12V

	LS-K1	LS-K1S
Appearance		 Double Solar Panel
Power	60W	60W
Output Voltage	DC 12V	DC 12V
Battery Capacity	Built-in 45AH Battery	Built-in 45AH Battery
Solar Panel Size	530mm*670mm	350mm*600mm*2
Package Size	730*590*230mm	652*483*206mm
Weight	8.9kg	8.9kg

LS-K1

1. 60W solar panel, size 530mm*670mm,
2. All-in-one metal bracket with built-in 3.2V 45AH battery;
3. Output voltage: DC12V; Maximum output current 4A
4. Support battery status indicator display;
5. It can last 2-3 days in cloudy and rainy conditions for a 12V 3W PTZ camera

LS-K1S

1. 60W Double solar panel (30W*2PCS), size 350mm*600mm,
2. All-in-one metal bracket with built-in 3.2V 45AH battery;
3. Output voltage: DC12V; Maximum output current 4A
4. Support battery status indicator display;
5. It can last 2-3 days in cloudy and rainy conditions for a 12V 3W PTZ camera

30W Solar Panel-DC 12V

	LS-K2	LS-K2S
Appearance		 Double Solar Panel
Power	30W	30W
Output Voltage	DC 12V	DC 12V
Battery Capacity	Built-in 30AH Battery	Built-in 30AH Battery
Solar Panel Size	350mm*600mm	350mm*350mm*2
Package Size	625*410*206mm	410*410*205mm
Weight	5.5kg	5.8kg

LS-K2

1. 30W solar panel, size 350mm*600mm,
2. All-in-one metal bracket with built-in 3.2V 30AH battery;
3. Output voltage: DC12V; Maximum output current 2.5A
4. Support battery status indicator display;
5. It can last 1-2 days in cloudy and rainy conditions for a 12V 3W PTZ camera

LS-K2S

1. 30W Double solar panel (15W*2PCS), size 350mm*350mm,
2. All-in-one metal bracket with built-in 3.2V 30AH battery;
3. Output voltage: DC12V; Maximum output current 2.5A
4. Support battery status indicator display;
5. It can last 1-2 days in cloudy and rainy conditions for a 12V 3W PTZ camera

120W Solar Panel-DC 12V

	LS-K3S	LS-K4S
Appearance	 Double Solar Panel	 Double Solar Panel
Power	120W	120W
Output Voltage	DC 12V	DC 12V
Battery Capacity	Built-in 90AH Battery	Built-in 120AH Battery
Solar Panel Size	530mm*670mm*2	530mm*670mm*2
Package Size	730*590*250mm	730*590*250mm
Weight	13kg	14kg

LS-K3S

1. 120W Double solar panel (60W*2PCS), size 530mm*670mm,
2. All-in-one metal bracket with built-in 3.2V 90AH battery;
3. Output voltage: DC12V; Maximum output current 4A
4. Support battery status indicator display;
5. It can last 2-3 days in cloudy and rainy conditions for a 12V 6W PTZ camera

LS-K4S

1. 120W Double solar panel (60W*2PCS), size 530mm*670mm,
2. All-in-one metal bracket with built-in 3.2V 120AH battery;
3. Output voltage: DC12V; Maximum output current 4A
4. Support battery status indicator display;
5. It can last 3-4 days in cloudy and rainy conditions for a 12V 6W PTZ camera

ABOUT LS VISION BRAND STORY



Love

With a respectful heart to the God and people
Love your industry



Security

Focus on the intelligent security industry
Keep improving and be a wise Chinese



Vision

First-class team
First-class products
First-class service
First-class brand

Company Vision

Become a respected world brand enterprise
continuously create value for customers,employees,shareholders and partners.



The Company's Core Values

The company's core values: Quality, Innovation, Dedication.
Based on this values, LS VISION will invest more research on new technology for a safe and green world.



Innovation

Keeping pace with the times, user thinking
To solve problems for this planet and society

Quality

Zero defective product
International perspective

Dedication

Altruism, love
Achieve each other, win-win situation

Company Team Values

Integrity

Integrity is the foundation of business

Efficiency

Act fast, collaborate efficiently

Cooperation

Only the perfect team, no perfect individual

Win-win

Mutual achievement, multi-win

